

ECO系列高效瓶坯注塑系统

ECO High Efficient Preform Injection System

x

D MARK

德玛克控股集团
DEMARK HOLDING GROUP

Im
v 0 pct 10 RR (US) Y 5' TVE 8%U2 DGO

Electric screw drive

Independent electric screw drive brings you both plasticization and energy efficiency.

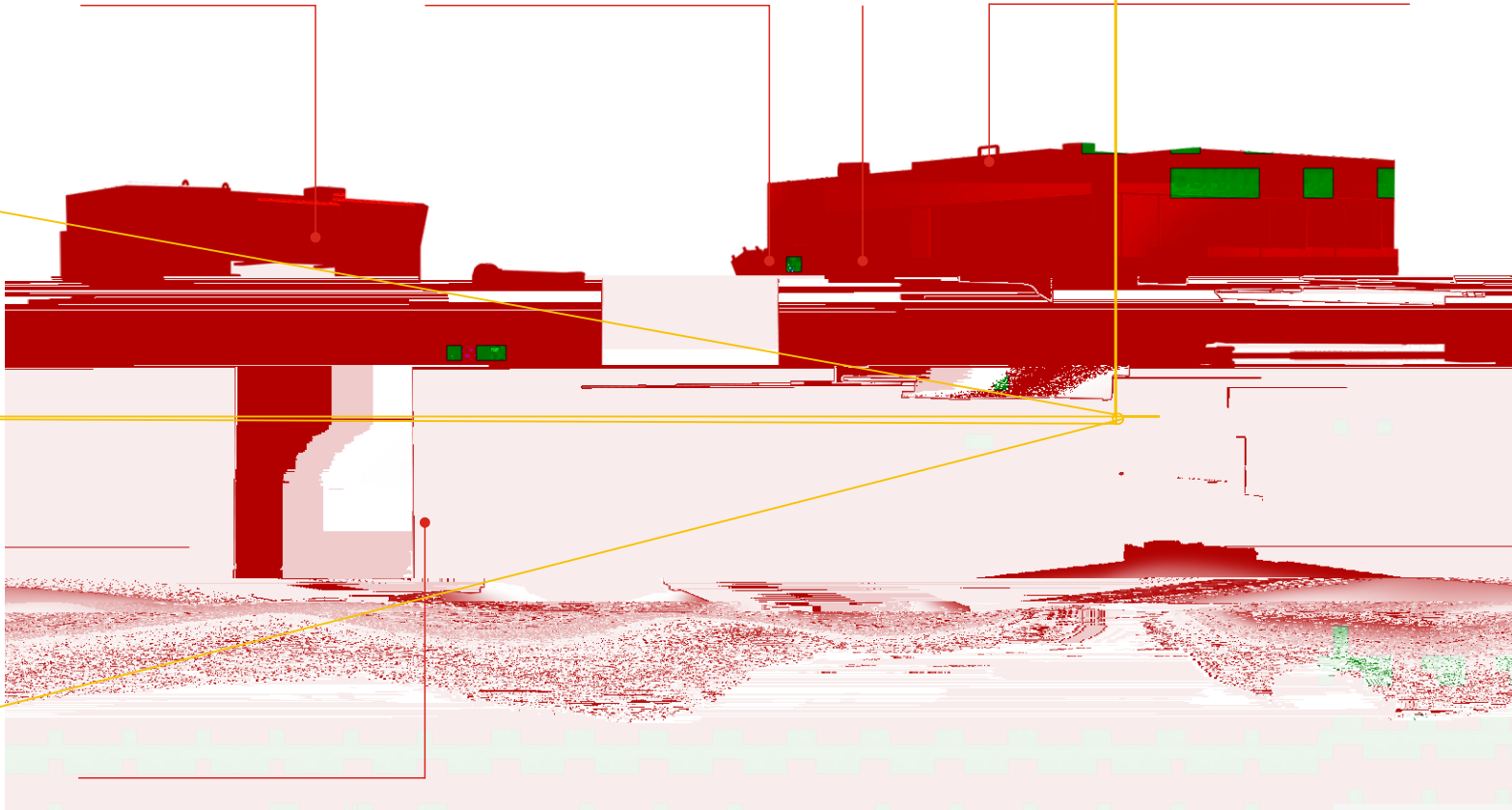
Pressure hold valve

With the advanced pressure hold technology, the system makes the plasticization and pressure hold at the same time therefore has a better cycle time for production.

Reliable clamping

Special design for PET preform mold, which ensure the fast clamping movement and uniformly forced of the mold.

Proportional valve control



Servo motor drive hydraulic system

The hydraulic system was driven by a servo motor which ensure the lower energy consumption and sufficient hydraulic power supply.

西门子控制系统 SIEMENS control system

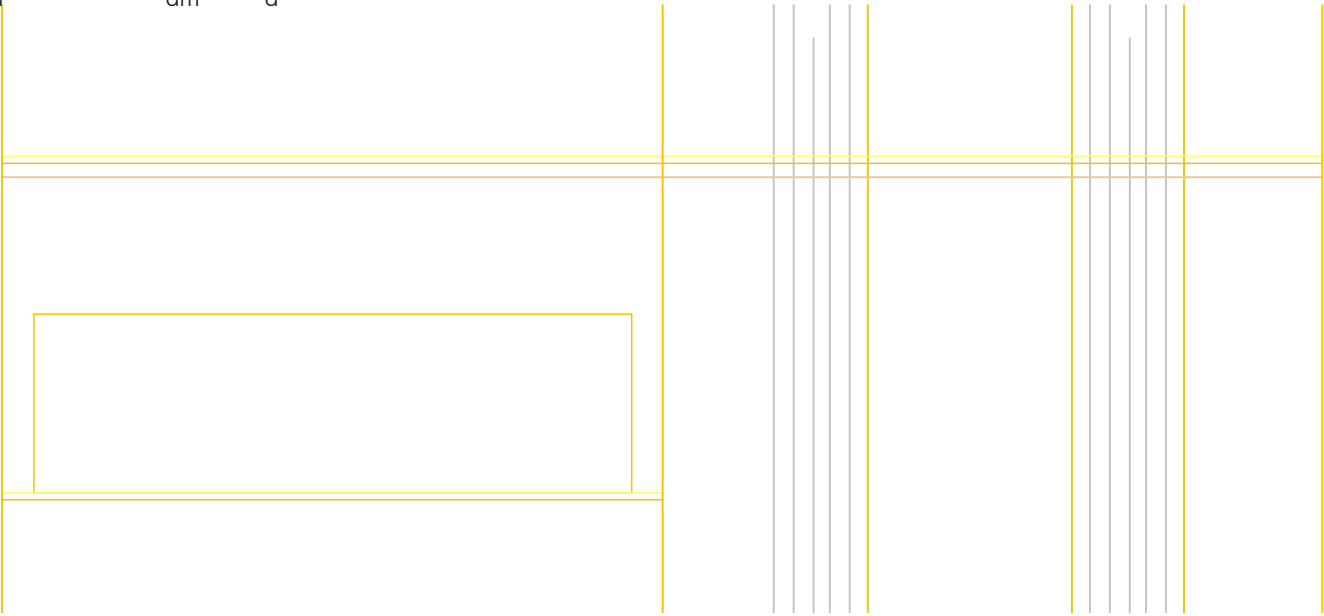
vo i n

serl

rslent

dm

d



		ECO260/2000	ECO260/2500	ECO300/2500	ECO300/3500
	L/D	25	25	25	25
	mm	80	90	90	100
	g	2000	2500	2500	3500
	g/s	80	110	110	150
	T	260	260	300	300
	mm	540	540	585	585
	mm	200-580	200-580	300-720	300-720
	mm	570x570	570x570	660x760	660x760
	mm	150	150	180	180
	T	8	8	20	20
	pcs	9	9	9	9
	pcs	32	32	48	72
Needle Vale Of Non-cutting PET Preform Mold					
	KW	39+45	39+55	39+55	39+39+82
	KW	12	12	36	36
	KW	43	51	51	63
	KW	30	30	55	55
	cavity	96	96	216	216
	cavity	32x3	32x3	48x3	72x3
	cm	257x160x220	270x160x220	280x160x250	280x160x250
	supply (3-phase AC)	V/HZ	380/50	380/50	380/50
	KW	169	187	226	314
		5-11	5-11	5-12	5-12
Chilling Water	Mpa	0.8	0.8	0.8	0.8
	L/min	700	700	900	900
		25	25	25	25
	Cooling Water	Mpa	0.3	0.3	0.3
	L/min	100	100	120	120
	Compressed Air	Mpa	0.7-0.9	0.7-0.9	0.7-0.9
	L/min	400	400	800	800
	(x x) Machine Size(LxWxH)	cm	840x160x240	860x160x240	880x170x250
	T	14	14	17	18

